



KIT PART NUMBERS 1670005, 1680000, 7970001
INSTRUCTIONS FOR INSTALLING A GUARD ON A DELIVERY PAN

CHECK THE PARTS RECEIVED IN THE KIT WITH THE PARTS LIST IN THESE INSTRUCTIONS. IF ANY PARTS ARE MISSING, CONTACT THE NATIONAL VENDORS PARTS DEPARTMENT IMMEDIATELY.

**Read these instructions carefully before installing the kit.
Keep these instructions for part numbers and for future reference.**

This kit contains the following :

PART NUMBER	DESCRIPTION	QUANTITY (PER KIT)
KIT 1670005 (FOR 38" WIDE MACHINES)		
1572445	PANEL ASSEMBLY - GLASS - LOWER - 38"	1
1572447	CHANNEL ASSEMBLY - 38" DELIVERY DOOR	1
1572448	GUARD - DELIVERY DOOR - UPPER - 38"	1
1572449	STRIP - THREADED - 38"	2
3104124	SCREW #8-32 X 9/16 P/H PHIL	4
9900035	WASHER - STL 7/16 X 3/16 X 3/16 THK	4
KIT 1680000 (FOR 32" WIDE MACHINES)		
1582229	PANEL ASSEMBLY - GLASS - LOWER - 32"	1
1582231	CHANNEL ASSEMBLY - 32" DELIVERY DOOR	1
1582232	GUARD - DELIVERY DOOR - UPPER - 32"	1
1582233	STRIP - THREADED - 32"	2
3104124	SCREW #8-32 X 9/16 P/H PHIL	4
9900035	WASHER - STL 7/16 X 3/16 X 3/16 THK	4
KIT 7970001 (FOR 40" WIDE MACHINES)		
4972209	PANEL ASSEMBLY - GLASS - LOWER - 40"	1
4972211	CHANNEL ASSEMBLY - 40" DELIVERY DOOR	1
4972212	GUARD - DELIVERY DOOR - UPPER - 40"	1
4972213	STRIP - THREADED - 40"	2
3104124	SCREW #8-32 X 9/16 P/H PHIL	4
9900035	WASHER - STL 7/16 X 3/16 X 3/16 THK	4



Part 1. Remove Vend Bucket From the Machine

1. Remove the right hand, left hand, and upper product deflectors.
2. Remove the gum and mint module (if present) and unplug the gum and mint harness.
3. Remove the six screws holding the vend bucket to the door. Remove the vend bucket.

Part 2. Modify the Machine Door (figure 1)

1. Remove the channel as shown. Remove the trim from the front of the channel.
2. Install the trim on the new channel furnished with your kit.
3. Install the new channel in the door, using only the two bottom screws.

Part 3. Disassemble the Vend Bucket (figure 2)

1. If present, remove the motor bracket.
2. Remove the linkage from the right side of the vend bucket (as you are facing the vend door).
3. Remove the right hand side plate by removing 4 sheet metal screws and twisting 4 metal tabs.
4. From the left side of the vend bucket, remove the nut retaining the vend door.

Part 4. Modify the Vend Door (figure 2)

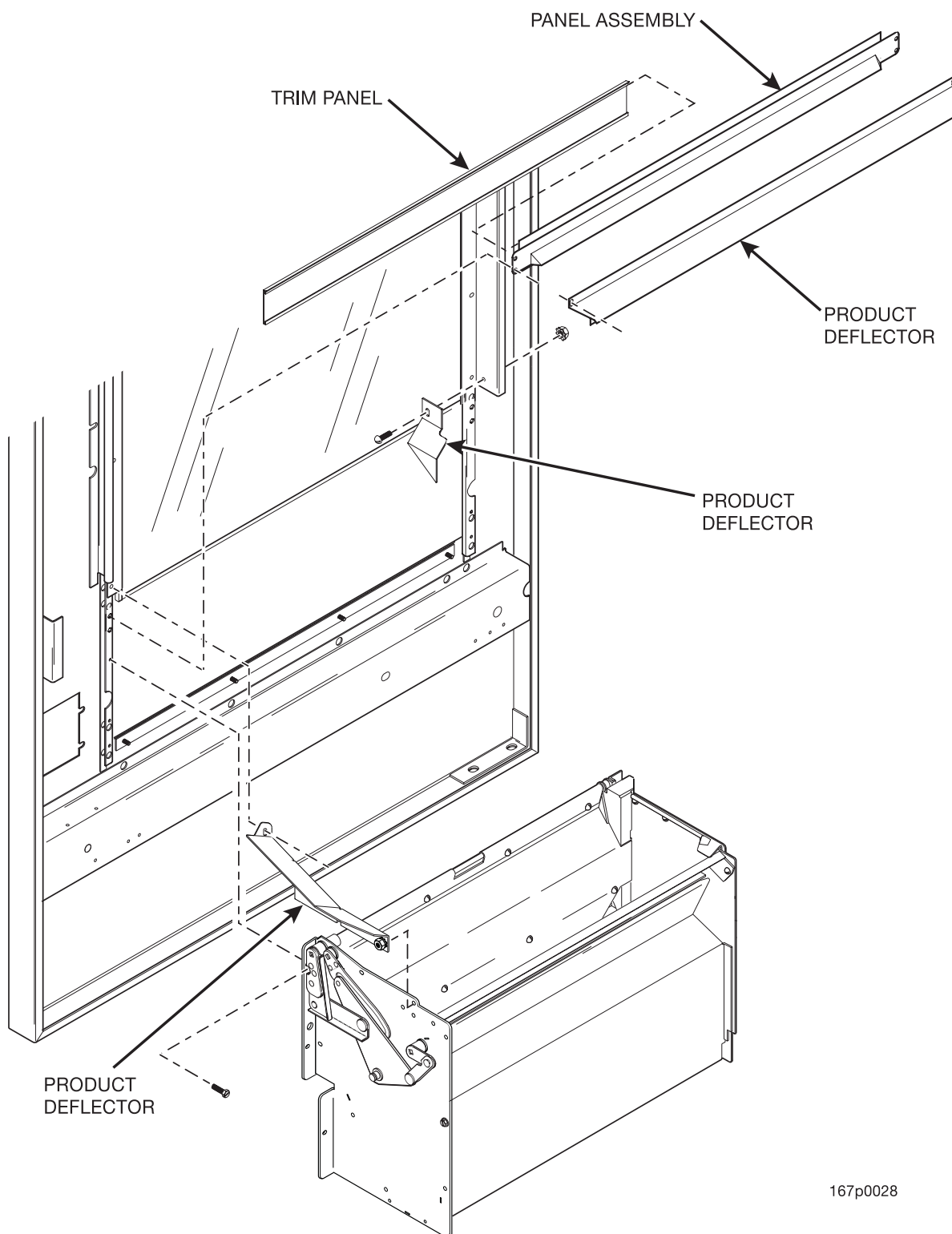
1. Remove the old channel from the vend door.
2. Remove the backing plate from the rear of the vend door.
3. Install the guard and thread strips to the door as shown. *Do not tighten screws.*

IMPORTANT: Push the guard as far toward the back side of the door as possible.

4. Tighten the screws securing the guard to the top of the door.
5. Reassemble the vend door.

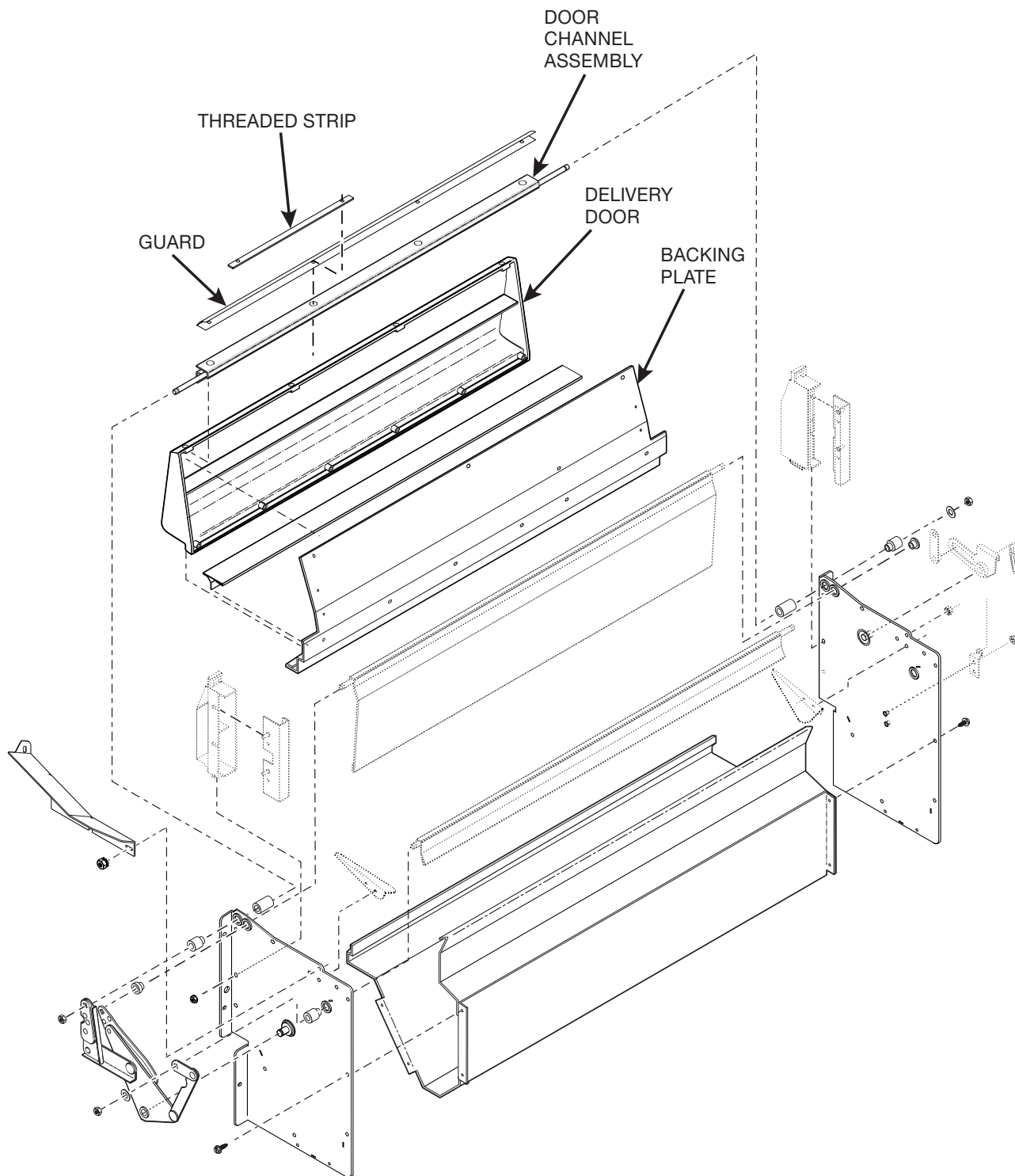
Part 5. Reassembly

1. Refer to figure 2 while you reassemble the vend bucket in the reverse order of disassembly.
2. Reinstall the vend bucket to the door. Be sure the newly installed guard goes under the new channel.
3. Reinstall all parts previously removed.



167p0028

Figure 1



167p0027

Figure 2